



# Brown Printing Company Adobe Acrobat 5.0 Settings



## Contact Information:

### Waseca Division

Ryan D. Waterbury  
Imaging Specialist  
P: 507.835.0823  
F: 507.835.0118  
E: [Ryan.Waterbury@bpc.com](mailto:Ryan.Waterbury@bpc.com)

### East Greenville Division

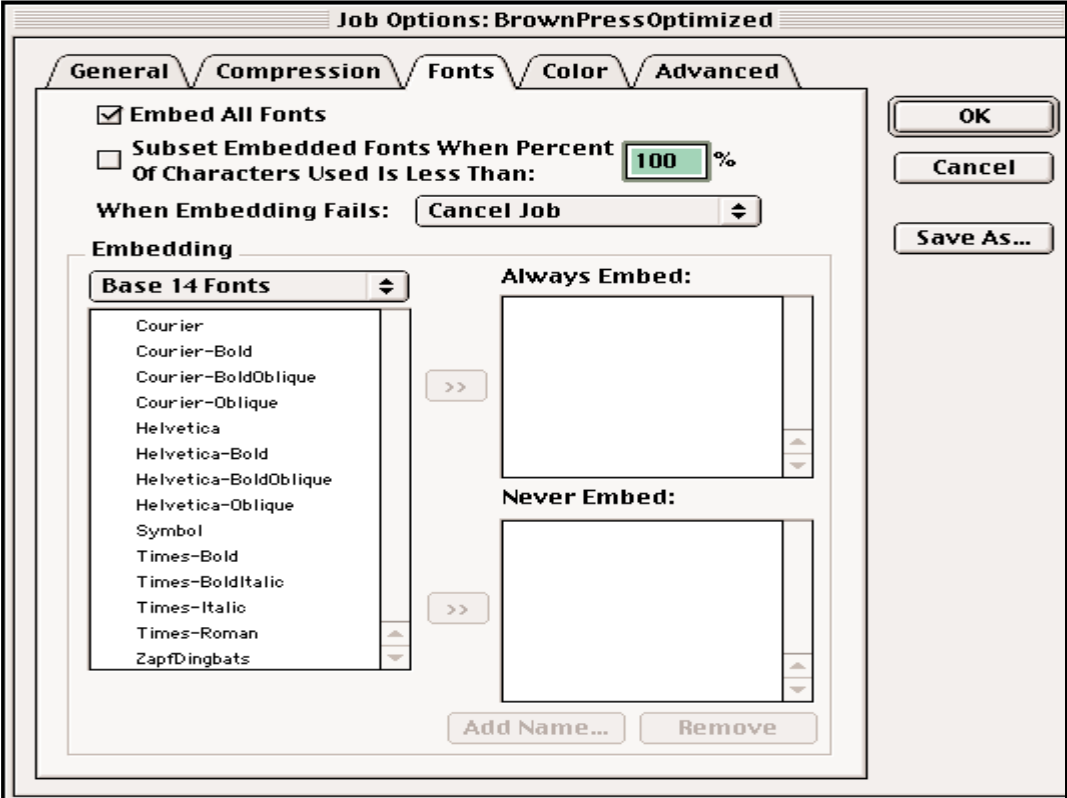
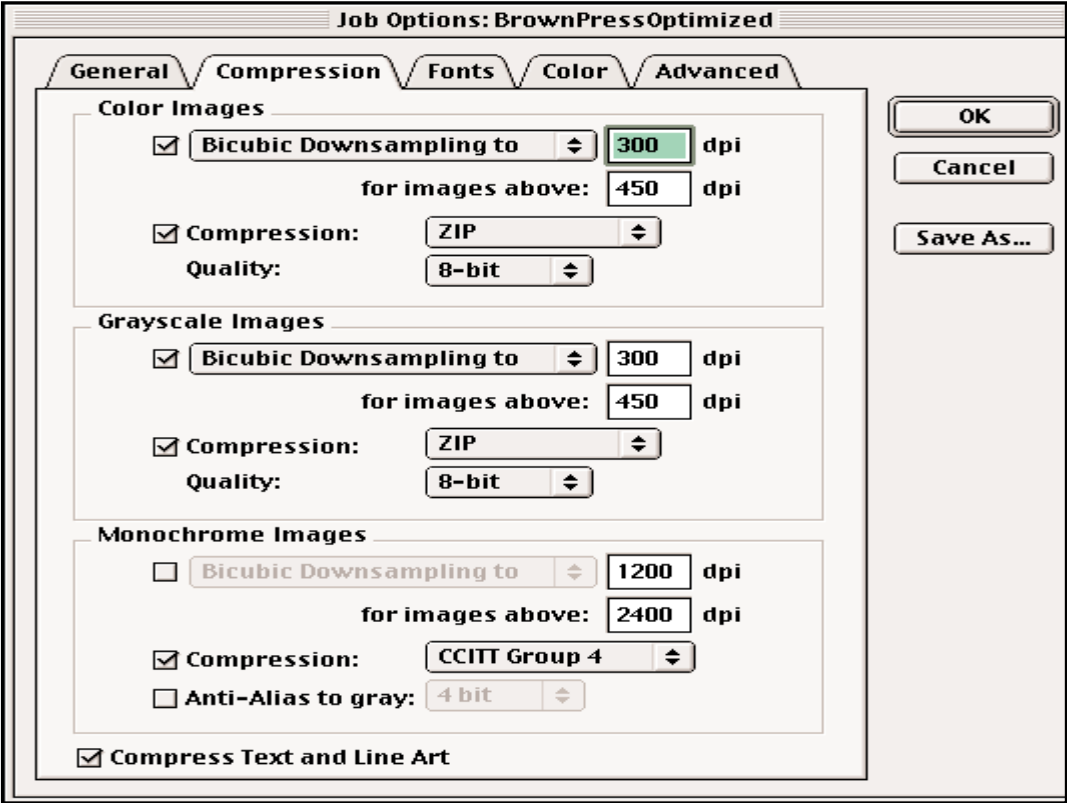
Kim Douglass  
Imaging Specialist  
P: 215.541.2471  
F: 215.679.5285  
E: [Kim.Douglass@bpc.com](mailto:Kim.Douglass@bpc.com)

### Woodstock Division

Tony Pratt  
Imaging Specialist  
P: 815.206.6321  
F: 815.338.0702  
E: [Tony.Pratt@bpc.com](mailto:Tony.Pratt@bpc.com)



*Adobe Acrobat 5*



*Adobe Acrobat 5*

